

NOKIA ARENA

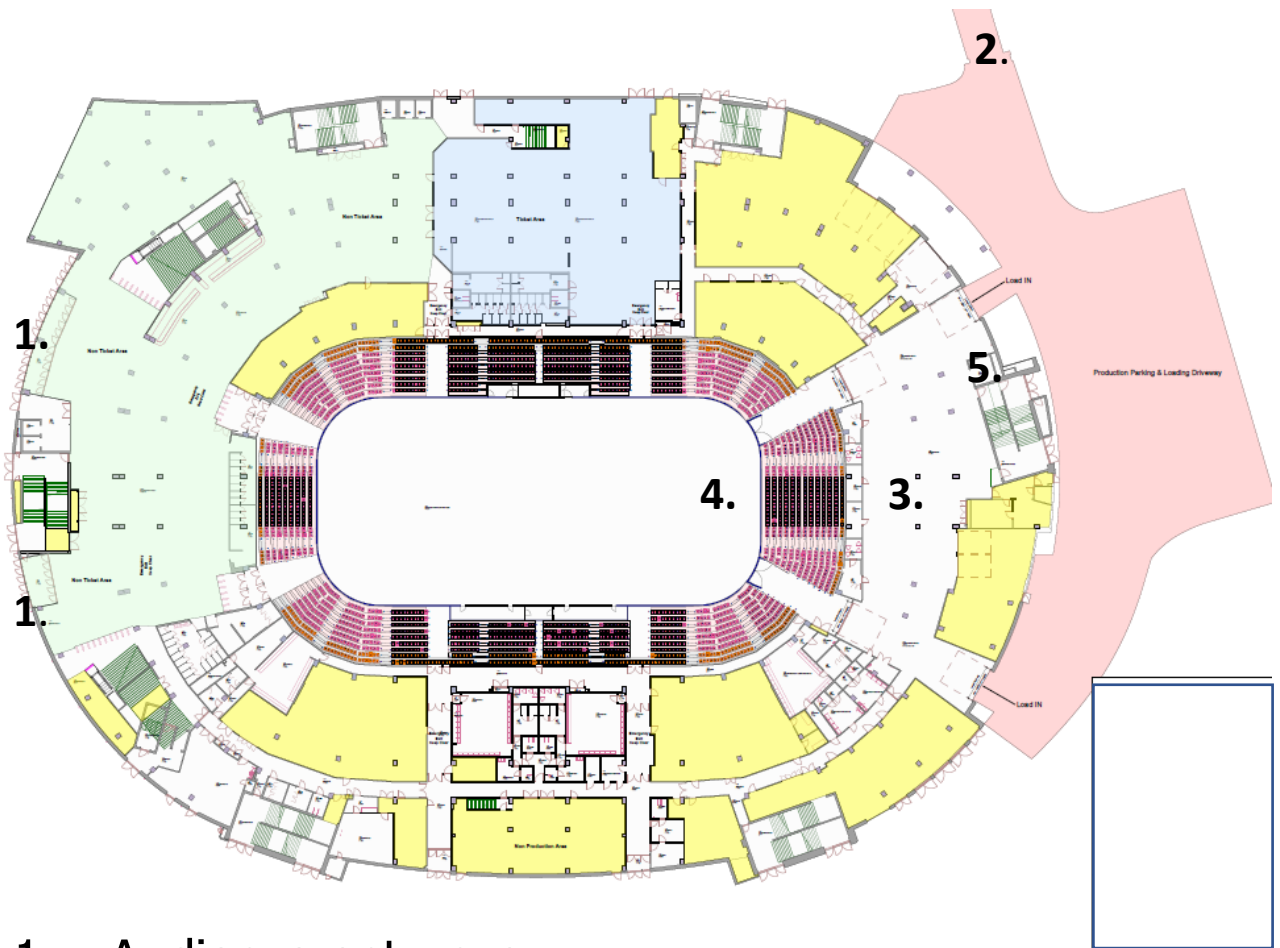


Venue info

General info

- Venue name: Nokia Arena
- Address: Kansikatu 3, 33100 Tampere
- Load in address: Kanslerinrinne 6, 33100 Tampere
- WWW: www.nokiaarena.fi
- Load in: Load in via ramp or forklift, no loading bay. Straight push to arena floor, ~25 m.
- Venue stage: Layher stage, details on page 11
- Clearance: 18m
Clearance under jumbotron variable.
Possible to raise jumbotron above 18m if it is not used by production
- Rigging: All up rigging done by Aku's Factory LTD, rigging details page 8-9
- Power: Arena level - max total 1600A,
Roof - max total 500A
- Mixer positions: As per artist choice, emergency exits considered
- Backstage rooms: see page 5
- Internet: Basic wi-fi & hardline internet incl. in venue rent (up to 5GB/s)
- Catering: Small 9 m² room for touring kitchen appliances. No gas allowed.
- Merchandising: High Peak Finland Oy, contact Jukka Lylykorpi, jukka.lylykorpi@highpeak.fi
- Ticket inspection: Tickets checked with automatic ticket gates, if ticket inspection personnel needed, additional costs may apply
- Pyro: Possible, according to local laws and venue regulations
- Venue regulations: Non smoking venue
Total blackout not allowed
Very limited case storing available, cases can only be stored in allowed areas, all corridors and fire lanes must be kept clear at all times.
- Noise limit: 100dB Laeq / 5 min at FOH, TBC

Overview of main arena level



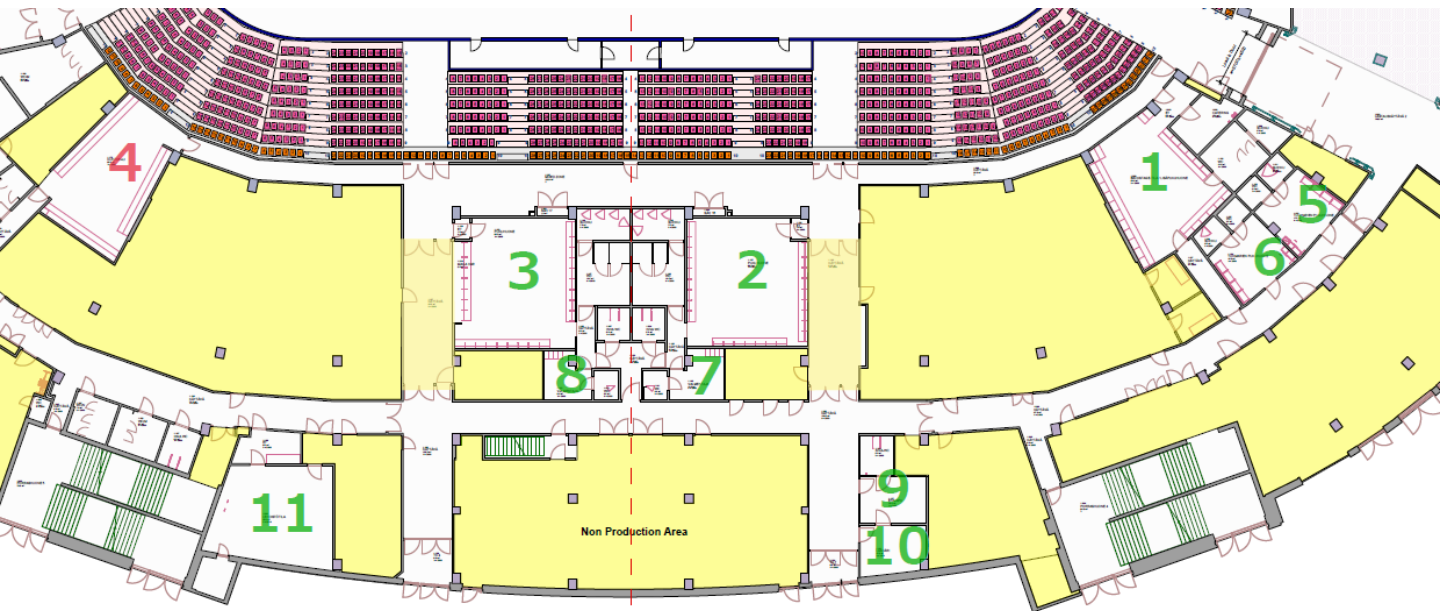
1. Audience entrances
2. Load in area entrance via bridge
3. Storage & tech area, possibility to drive in, outer doors 4.7 m (w) x 4,35 m (h), inner doors 3.8 m (w) x 4.5 m (h)
4. Usual stage end
5. Elevator (-1st -> 5th floor), dimensions 1500x2600x2200mm, door 1300x2100mm, max load 2500kg

Green & blue areas: audience & restaurant

Yellow areas: venue and sublet areas, not available for production

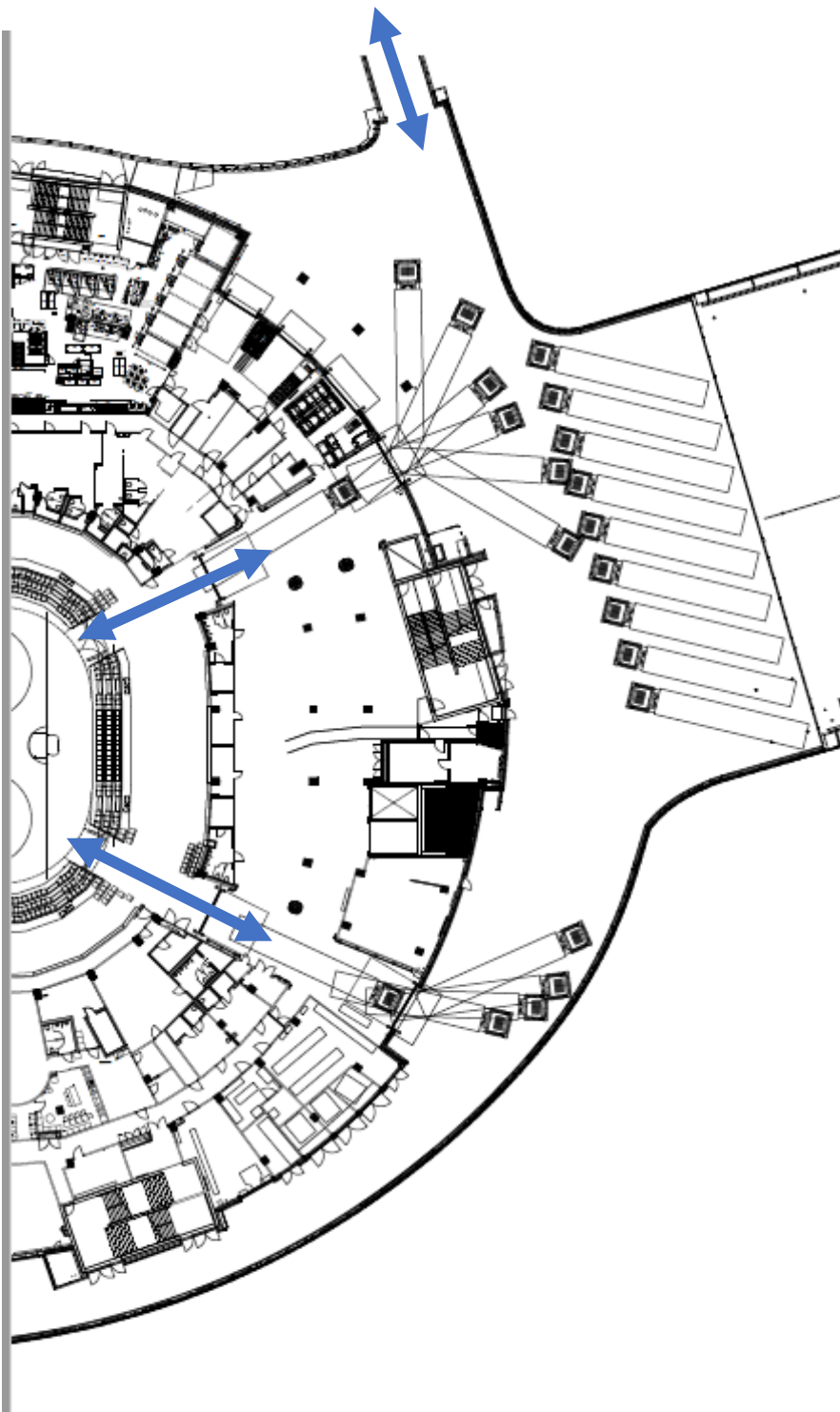
Backstage areas: see page 5

Backstage area



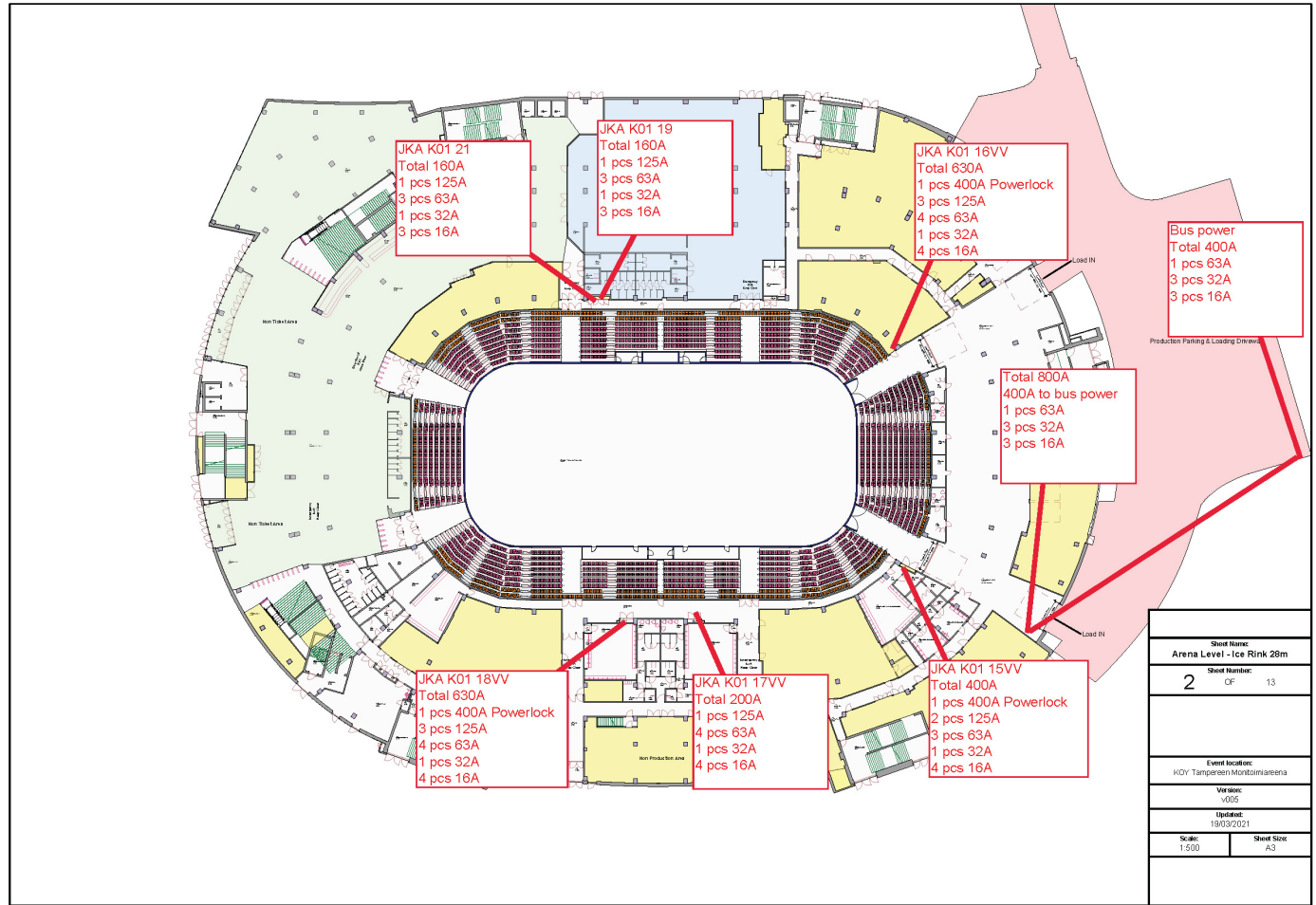
1. Backstage room 1
54 m², private toilet + showers, small 9m² kitchen area with dish washer, HVAC + power for touring appliances, no gas allowed.
2. Backstage room 2
66 m², private toilet + showers
3. Backstage room 3
65 m², toilets + showers next door
4. Backstage room 4
56 m², toilets + showers next door. Available per advance request (min 2 months), no extra fee.
5. Small room 1
17 m², private toilet + shower
6. Small room 2
18 m², private toilet + shower
7. Small room 3
10 m², private toilet + shower
8. Small room 4
10 m², private toilet + shower
9. Small room 5
13 m², private toilet, can be accessed through small room 6 via door
10. Small room 6
14 m², can be accessed through small room 5 directly via door
11. Press area
49 m², toilets next door, no shower. Simple press conference equipment available.

Load in area



Example with 17 m trucks. More parking areas available per request, driving distance less than 10 min.

Production power

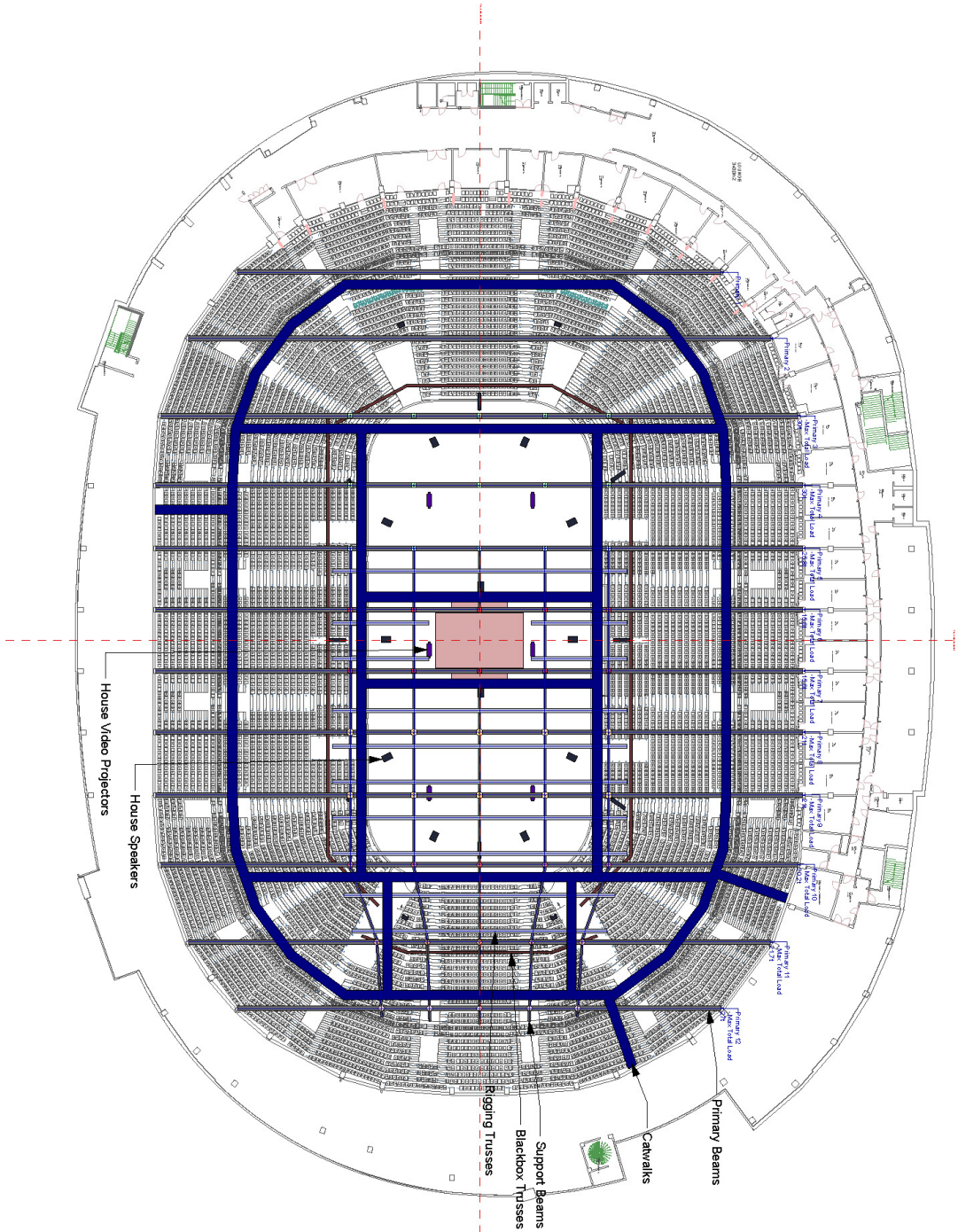


Arena level max total 1600A.

Roof level max total 500A

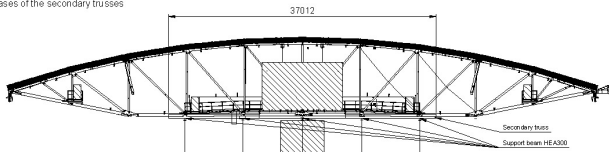
400A Powerlock + CEE connectors 63A-16A on catwalk

Rigging information



Nokia Arena - Venue Drawings	
Sheet Name:	Roof
Sheet Number:	11
Project Contact:	Alex Regan Tusamsoft Production alex.regan@tusenatampere.fi +358 50 551 1530
Event Location:	KOY Tampereen Montoniareena
Version:	V013
Update:	01/02/2022
Scale:	1:500
Sheet Size:	A3
NOKIA ARENA	

Man load cases of the secondary trusses



Option 1. Continuous max. load in every span



Option 2. Continuous max. load in alternate spans



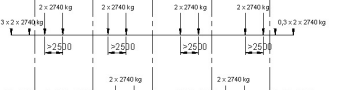
Option 3. Single point load in random place between supports in every span



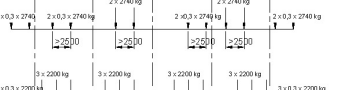
Option 4. Single point load in random place between supports in alternate spans



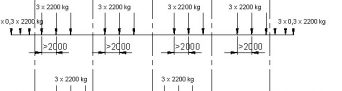
Option 5. Double point loads in random place between supports in every span



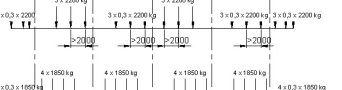
Option 6. Double point loads in random place between supports in alternate spans



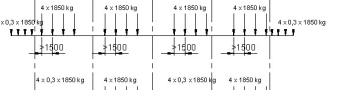
Option 7. Three lines point load in random place between supports in every span



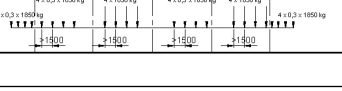
Option 8. Three lines point load in random place between supports in alternate spans



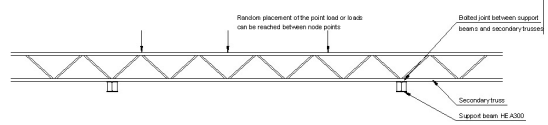
Option 9. Four times point load in random place between supports in every span



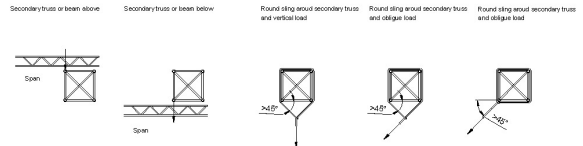
Option 10. Four times point load in random place between supports in alternate spans



Secondary load cases of the secondary trusses



Loading options



Nokia Arena - Venue Drawings	
Sheet Name: Rigging Trusses Loading Info	
Sheet Number: 12	CF 35
Project Contact: Alex Regan, Tuusulantopasliikkeen Production Manager, alex.regan@arenavenue.fi, +358 50 551 1530	
Event location: HDY Tampereen Montimäntien	
Version: v013	
Updated: 01/02/2022	
Scale: 1:500	Sheet Size: A3
NOKIA ARENA	

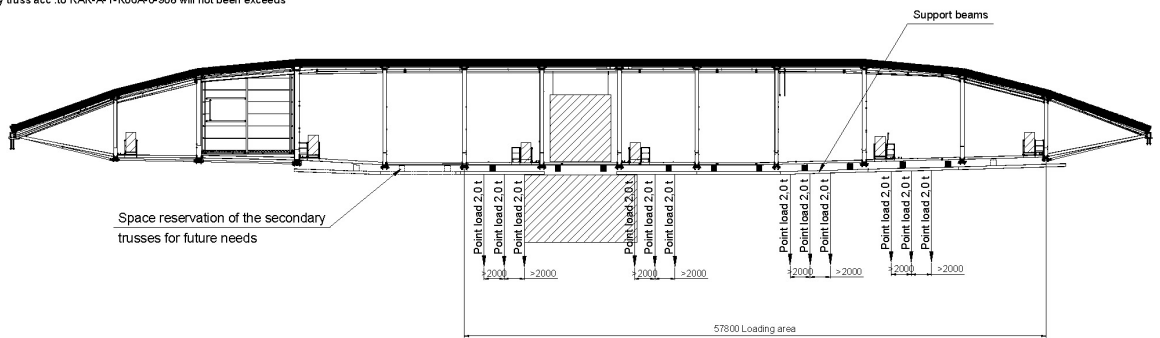
Support Beams

Support beams below the lower chords of the primary trusses

Allowed vertical point loads between the lower chords

3 pcs 2.0 t points loads c/c >2.0 m

Totally load capacity of the primary truss acc. to RAK-A-T-K06A-0-908 will not be exceeded



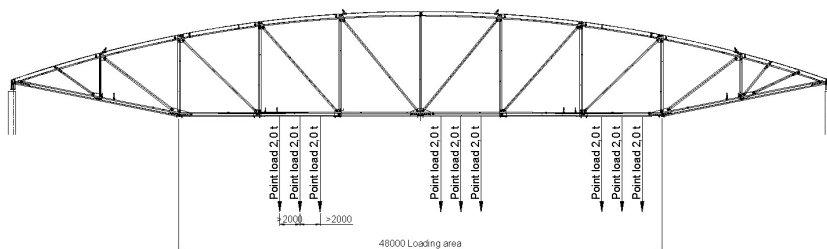
Primary Beams

Primary steel trusses in grid lines 3-12

Allowed vertical point loads between node points of the lower chords

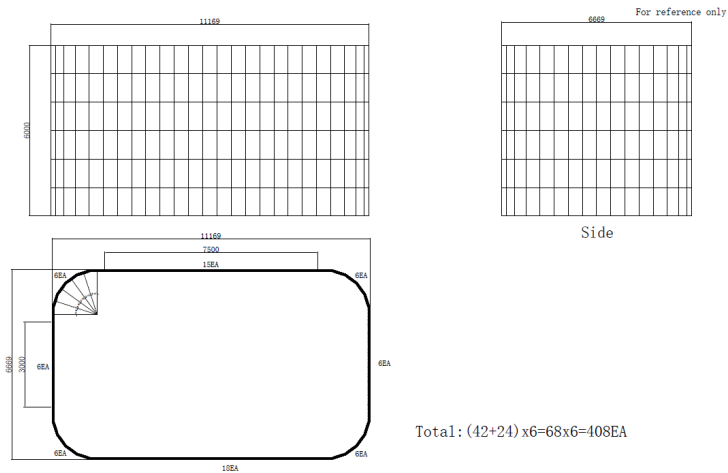
3 pcs 2.0 t point loads c/c >2.0 m

Totally load capacity of the primary truss acc. to RAK-A-T-K06A-0-908 will not be exceeded



Nokia Arena - Venue Drawings	
Sheet Name: Beams Loading Info	
Sheet Number: 13	CF 35
Project Contact: Alex Regan, Tuusulantopasliikkeen Production Manager, alex.regan@arenavenue.fi, +358 50 551 1530	
Event location: HDY Tampereen Montimäntien	
Version: v013	
Updated: 01/02/2022	
Scale: 1:500	Sheet Size: A3
NOKIA ARENA	

House LED screens + mediacube

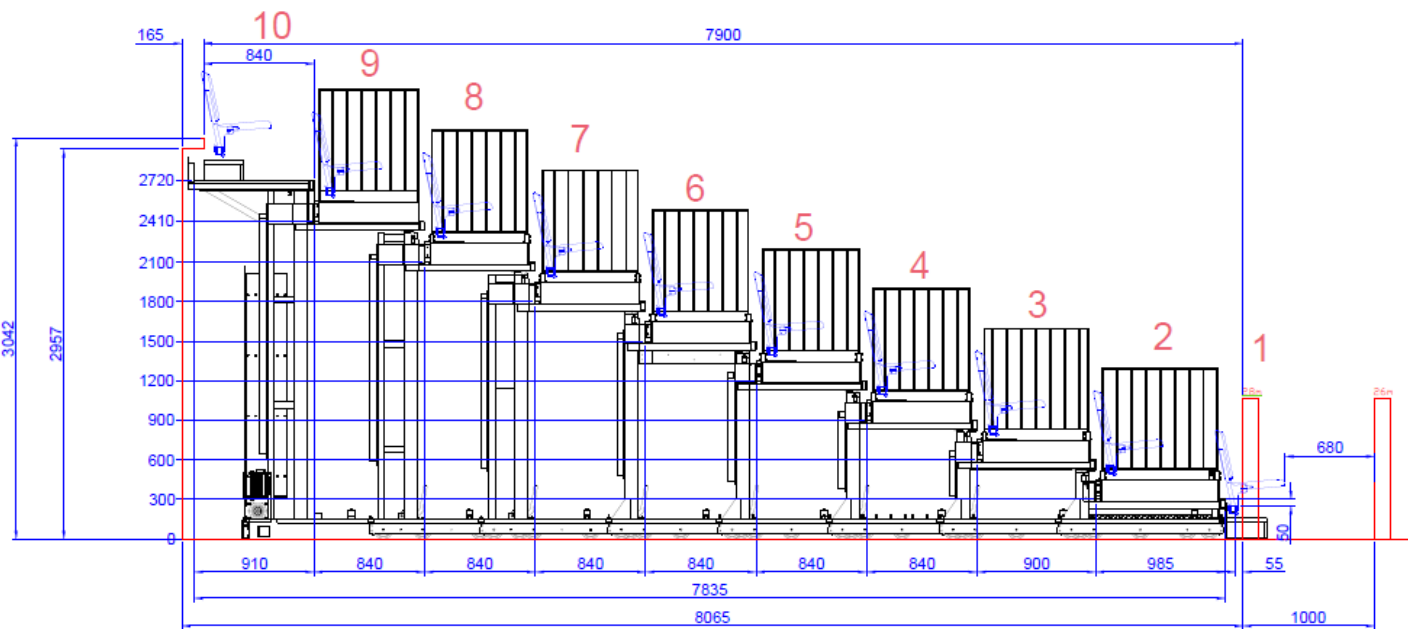
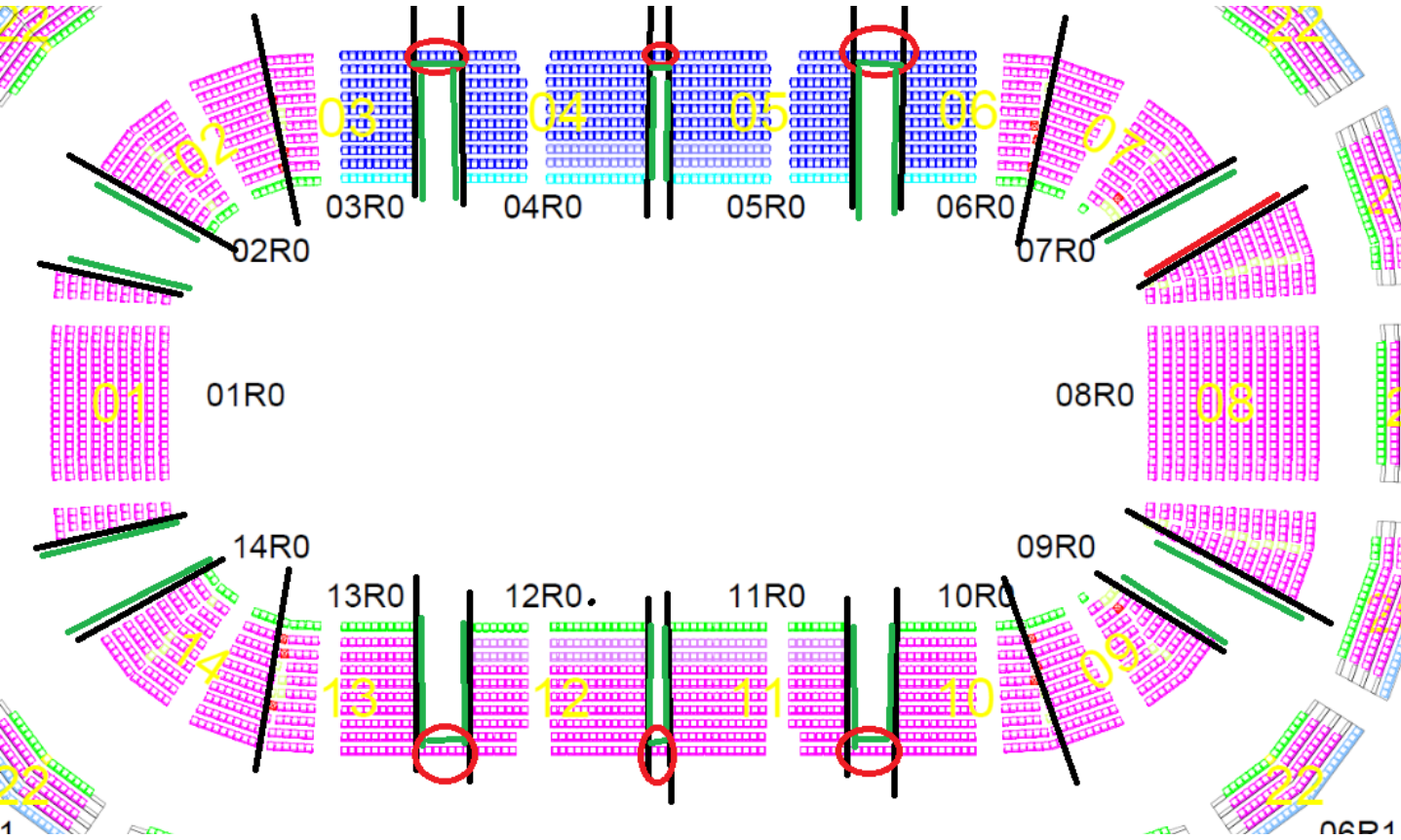


Arena mediacube

Size: 11169 x 6669 x 6000 mm

Trim: Can be lifted above house clearance 18 m if not used or lowered to desired height, details TBC

Retractable seating information



A K U N T E H D A S

Oy Aku's Factory Ltd
Nokia Arena Tampere
Stage specifications

Manufacturer:	Wilhelm Layher GmbH & Co KG
Max size:	260 sq. meters
Height:	150-180 cm
Stairs:	2 sets of stairs with handrails
Safety rails:	Included
Ramps:	2 pcs 4x1 m aluminum ramps, can be built to 8 m ramp with a 2x1x1 m stage deck, which is included
Masking:	Black skirt for front of stage, height 150 cm, additional masking available by additional costs
Building time:	Approx. 4 hrs to build and 2 hrs to dismantle
Forklift:	1 forklift is needed for the whole building and dismantling time

Stage can be built in any form consisting of 2x2 m blocks and max 10 pcs of 2x1 m blocks.

Stage is by default built on wheels. Please note that the workforce to move a large stage is not included. Required workforce will be determined by the size of the stage.

Stage height 0,85-1,5 m (no wheels) or 1,8-4,0 m available by additional costs.

Oy Aku's Factory Ltd

Kari Wikström

+358 44 782 2252

kari.wikstrom@akuntehdas.fi